



MILWAUKEE VOLLEYBALL GAME NOTES

10 NCAA TOURNAMENTS | 14 CONFERENCE CHAMPIONSHIPS | 12 ALL-AMERICANS

MKEPanthers.com || @MKE_Volleyball || #ForTheMKE || Contact: Sean Engel || Email: engelsf@uwm.edu || Office: 414-435-8118

2024 SCHEDULE / RESULTS

Date	Opponent	TV	Time
August			
30	No. 5 STANFORD	ESPN+	L, 0-3
31	vs. Western Illinois		W, 3-1
September			
1	at Northern Illinois	ESPN+	W, 3-2
5	at Southern Methodist	ESPN+	L, 0-3
6	vs. Loyola Marymount		L, 1-3
7	vs. Weber State		W, 3-1
10	at No. 8 Wisconsin	BIG+	L, 0-3
13	ILLINOIS STATE	ESPN+	W, 3-2
14	ST. THOMAS (MINN.)	ESPN+	L, 0-3
15	IOWA	ESPN+	W, 3-1
19	at DePaul	FLOSPORTS	7:00 pm
21	vs. UIC		3:00 pm
27	at Oakland *		5:00 pm
28	at Oakland *		1:00 pm
October			
1	at Green Bay *	ESPN+	6:00 pm
4	IU INDIANAPOLIS *		6:00 pm
5	IU INDIANAPOLIS *		2:00 pm
11	at Northern Kentucky *		5:00 pm
12	at Northern Kentucky *		1:00 pm
18	WRIGHT STATE *	ESPN+	6:00 pm
19	WRIGHT STATE *	ESPN+	2:00 pm
22	at Marquette		7:00 pm
25	YOUNGSTOWN STATE *		6:00 pm
26	YOUNGSTOWN STATE *		2:00 pm
29	GREEN BAY *	ESPN+	6:00 pm
November			
1	at Purdue Fort Wayne *		6:00 pm
2	at Purdue Fort Wayne *		1:00 pm
8	at Robert Morris *		5:00 pm
9	at Robert Morris *		12:00 pm
15	CLEVELAND STATE *	ESPN+	6:00 pm
16	CLEVELAND STATE *	ESPN+	2:00 pm
22	Horizon Quarterfinals ^	ESPN+	TBA
23	Horizon Semifinals ^	ESPN+	TBA
24	Horizon Championship ^	ESPN+	TBA

*Horizon League Game | ^ Horizon Postseason
All times Central

HOME MATCHES IN BOLD

HOME BROADCAST INFORMATION

ESPN+ | ESPN App | @ESPNPlus
Matt Menzl | @MMenzl

ESPN+ is offered at a price of \$10.99/month or \$109.99/year.
Fans can sign-up or cancel at anytime.

It is also available as part of a bundle offer that gives subscribers access to Disney+, Hulu, and ESPN+ starting at \$14.99/month.

MILWAUKEE PANTHERS



2024 RECORD

5-5 Overall
0-0 Horizon

ALL-TIME RECORD (Div. I)

591-444 Overall
314-144 Conference

SUSIE JOHNSON

Career Record: 310-264
Record at MKE: 289-217

MATCH 11

SEPTEMBER 19 at DePAUL

McGrath-Phillips Arena | Chicago, Illinois | 7:00 pm | FLOSPORTS



BLUE DEMONS

6-3 Overall
0-0 Big East

ALL-TIME SERIES

Milwaukee Leads, 13-3
Last Meeting: Sept. 12, 2023

MARIE ZIDEK

Career Record: 86-117
Record at DePaul: 86-117

MATCH 12

SEPTEMBER 21 vs. UIC

McGrath-Phillips Arena | Chicago, Illinois | 3:00 pm



FLAMES

7-2 Overall
0-0 Missouri Valley

ALL-TIME SERIES

Milwaukee Leads, 44-22
Last Meeting: Nov. 20, 2021

JUSTIN INGRAM

Career Record: 300-168
Record at UIC: 139-76

QUICK HITS

- » Milwaukee hosted the Panther Invitational this past weekend and went 2-1 overall, with wins on Friday vs. Illinois State and Sunday vs. Iowa.
- » The Panther win over Illinois State came as a reverse sweep after dropping the initial two sets to the Redbirds. Last season Milwaukee had two reverse sweeps, including a non-conference win at home vs. Air Force, and a road league matchup at Purdue Fort Wayne.
- » Milwaukee makes the quick trip down Interstate 94 to take part in this weekend's 'Chicago Cup' hosted by DePaul. The Panthers will open the event against host DePaul on Thursday evening at 7 p.m., while meeting UIC on Saturday afternoon at 3 p.m.
- » This will be the second-straight season that Milwaukee and DePaul will meet, last year the Panthers blanked the Blue Demons in three sets at the Klotsche Center. MKE is 13-3 in all-time meetings, including wins in eight consecutive matches. Over that span the Panthers have dropped just two sets, dating back to 2002.
- » Longtime league foe UIC will be back on the schedule for Milwaukee for the first time since the Flames were in the Horizon League in 2021. UIC eliminated the Panthers in the Horizon League postseason with a reverse sweep in the semifinals. This is the first time the Panthers and Flames will meet in the 'Windy City' since 2019, a 3-0 Panther win on Sept. 28 that season.
- » DePaul enters the 'Chicago Cup' with a 6-3 mark, which includes a 3-0 win over St. Thomas, who the Panthers had just lost to on Sept. 14 at home. The Blue Demons have one other common opponent as both Milwaukee and DePaul will play at Marquette in mid-October.
- » UIC is 7-1 to start the year and takes on Chicago State before heading into the 'Chicago Cup' the Flames knocked off both Purdue Fort Wayne (3-1) and Western Illinois (3-1) earlier this season and will take on Illinois State in league play in late October. Milwaukee also defeated Western Illinois in four sets on Aug. 31.

HEAD TO HEAD

CATEGORY	MILWAUKEE	DEPAUL	UIC
Kills (Team/Opp)	441/541	480/471	502/417
Errors (Team/Opp)	169/209	205/202	208/195
Attempts (Team/Opp)	1,420/1,477	1,339/1,394	1,214/1,173
Attacking Percent (Team/Opp)	.192/.225	.205/.193	.242/.189
Assists (Team/Opp)	388/500	453/425	469/379
Assists per Set (Team/Opp)	10.2/13.2	12.6/11.8	12.7/10.2
Service Aces (Team/Opp)	56/65	48/47	44/47
Digs (Team/Opp)	561/669	603/550	444/400
Total Blocks (Team/Opp)	72/71	73/81	82/85

**General Information**

Location	Milwaukee, Wis.
Founded	1885
Enrollment	24,836
Nickname	Panthers
Colors	Black and Gold
Facility / Capacity	Klotsche Center / 2,500
Affiliation	NCAA Division I
Conference	Horizon League
Chancellor	Mark Mone
Director of Athletics	Amanda Braun
Associate AD/SWA	Kathy Litzau
Ticket Office Phone	414-229-5886

Team History

First Year of Volleyball	1973
All-Time Record	1158-697-9
First Year in Division I	1990
NCAA Division I Record	591-444
NCAA Tournament Appearances	10
Last NCAA Appearance	2013
Last NCAA Opponent	Wisconsin
Result	L, 3-0

Volleyball Staff

Head Coach	Susie Johnson
	Idaho State '93
Office Phone	414-229-4483
Associate Head Coach	Lindsey Vanden Berg
	Milwaukee '03
Assistant Coach	Katie Adams
	Parkside '19
Athletic Trainer	Katie Wissing
	Saint Louis '21

Media Relations

Director of Athletic Communications	Sean Engel
Office/Cell Phone	414-435-8118
E-mail	engelsf@uwm.edu
Assistant AD Communications	Chris Zills
Communications Assistant	Chip Kindt
Content Creation & Strategy	Rachel Klemp
Multimedia Services	Andrew Levesque
Athletics Website	www.mkepanthers.com

2024 HORIZON LEAGUE STANDINGS

Team	Horizon League			Overall			Strk
	W	L	Pct.	W	L	Pct.	
Cleveland State	0	0	.000	7	2	.778	W3
Wright State	0	0	.000	7	2	.778	W3
Milwaukee	0	0	.000	5	5	.500	W1
Purdue Fort Wayne	0	0	.000	4	5	.444	L2
Youngstown State	0	0	.000	4	5	.444	L1
IU Indianapolis	0	0	.000	4	6	.400	W1
Green Bay	0	0	.000	3	6	.333	W2
Oakland	0	0	.000	3	6	.333	L1
Robert Morris	0	0	.000	3	6	.333	L5
Northern Kentucky	0	0	.000	2	7	.222	L4

AROUND THE HORIZON LEAGUE

Sept. 14	Eastern Washington 3, Northern Kentucky 1 College of Charleston 3, Robert Morris 0 IU Indianapolis 3, Rider 1 Cleveland State 3, Norfolk State 1 Bucknell 3, Youngstown State 0 Wright State 3, Miami (Fla.) 1 Valparaiso 3, Purdue Fort Wayne 0 Oakland 3, Saint Francis 0 Green Bay 3, Central Michigan 2 Utah Tech 3, Robert Morris 0
Sept. 15	Michigan 3, Oakland 1 Wright State 3, Ohio State 1
Sept. 17	Purdue Fort Wayne at Michigan State 5:00 pm
Sept. 18	Indiana State at IU Indianapolis 6:00 pm
Sept. 19	Xavier at Northern Kentucky 5:00 pm Youngstown State at Akron 5:00 pm Cleveland State at Kent State 5:00 pm Minnesota at Green Bay 7:00 pm
Sept. 20	Oakland vs. Liberty 9:30 am Oakland vs. Eastern Kentucky 3:30 pm Akron at Cleveland State 5:00 pm Kent State at Youngstown State 5:00 pm Wright State at Ball State 5:00 pm Canisius at Robert Morris 5:00 pm Saint Francis at Purdue Fort Wayne 6:00 pm St. Thomas at Green Bay 7:00 pm
Sept. 21	Indiana State at Purdue Fort Wayne 10:00 am Robert Morris vs. Central Michigan 11:00 am Oakland at Ohio 12:00 pm North Dakota at Green Bay 2:00 pm Wright State at Butler 2:00 pm Miami (Ohio) at Northern Kentucky 3:00 pm

IT'S "MILWAUKEE"

A lot has been made of the correct way to talk about the University of Wisconsin-Milwaukee, especially in the area of athletics. It would be appreciated if you would refer to the athletics teams as either "Milwaukee" or "MKE".

Milwaukee Athletics is making an effort to brand itself as "Milwaukee" instead of other references. Please avoid UW-Milwaukee, UW-M, Wisc.-Mil, UW-MIL, Wisconsin-Milwaukee, etc.

Your cooperation in this matter is greatly appreciated.

2024 HORIZON LEAGUE PRESEASON POLL

School (1st place votes)	Points
1. Wright State (9)	99
2. Northern Kentucky (1)	85
3. Milwaukee	73
4. Green Bay	71
5. Cleveland State	63
6. Oakland	53
7. Purdue Fort Wayne	38
T8. IU Indianapolis	26
T8. Robert Morris	26
10. Youngstown State	16

MILWAUKEE VOLLEYBALL ROSTER

No.	Name	Pos.	Ht.	Yr.	Hometown (High School/College)	Pronunciation
1	Tatum Catalano	OH/RS	6-0	Sr.	Germantown, Wis. (Germantown)	TAY-tum cat-uh-LAH-no
2	Bri Geurts	RS/MB	6-0	Sr.	De Pere, Wis. (De Pere)	GERTS
3	Lakyn Graves	MB	6-2	Sr.	Menomonee Falls, Wis. (Sussex Hamilton/Omaha)	LAY-kin
4	Josie Johnson	S	5-7	Jr.	Burlington, Wis. (Waterford Union)	
5	Milica Tomic	S	5-7	Fr.	Dyer, Ind. (Lake Central)	mil-LEET-za TOE-meech
6	Alexis Lewis	MB	6-1	Sr.	Roscoe, Ill. (Hononegah Community/Memphis)	
7	Gabby Wire	OH	5-9	Fr.	Crystal Lake, Ill. (Crystal Lake South)	
8	Jenna Soerens	OH/RS	5-11	Fr.	Oostburg, Wis. (Oostburg)	SOAR-ins
9	Kati Goba	DS	5-4	So.	Mukwonago, Wis. (Wisconsin Lutheran)	GOE-buh
10	Czhen Beneby	MB	6-3	Sr.	West Palm Beach, Fla. (Alexander W. Dreyfoos/Virginia)	ZEN BEN-uh-bee
11	Natalie Schmitz	OH	6-1	Jr.	Ham Lake, Minn. (Blaine)	
12	Bella Lipski	MB	6-2	So.	Milwaukee, Wis. (Divine Savior Holy Angels)	
13	Kara Erdmann	DS	5-6	Jr.	Forreston, Ill. (Forreston)	
14	Madi Malone	OH	6-0	Sr.	Newark, Ill. (Newark)	
15	Emily Hansen	OH/RS	5-10	Fr.	Mayville, Wis. (Mayville)	
16	Rachel Scott	RS	6-2	Jr.	Belvidere, Ill. (Belvidere North)	
17	Hallie Cook	DS/L	5-8	Jr.	Springfield, Mo. (Springfield Catholic/UNC Greensboro)	HAL-lee

Head Coach: Susie Johnson (18th season)**Associate Head Coach:** Lindsey Vanden Berg (18th season)**Assistant Coach:** Katie Adams (first season)**Athletic Trainer:** Katie Wissing (third season)**Strength & Conditioning:** Bennett Reed (second season)

TELEVISION/RADIO ROSTER



Tatum
Catalano



Bri
Geurts



Lakyn
Graves



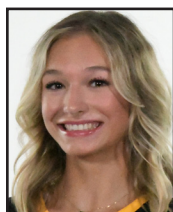
Josie
Johnson



Milica
Tomic



Alexis
Lewis



Gabby
Wire



Jenna
Soerens



Kati
Goba



Czhen
Beneby



Natalie
Schmitz



Bella
Lipski



Kara
Erdmann



Madi
Malone



Emily
Hansen



Rachel
Scott



Hallie
Cook



Susie
Johnson

TEAM BREAKDOWN

Class

Seniors – 6
Juniors – 5
Sophomores – 2
Freshmen – 4

Position

Hitters – 8
Middles – 4
Setters – 2
Defensive – 3

Home State

Wisconsin – 8
Illinois – 5
Florida – 1
Indiana – 1
Minnesota – 1
Missouri – 1

Height

6-2 Plus – 4
6-0 to 6-1 – 5
5-8 to 5-11 – 4
5-4 to 5-7 – 4

Status

Returners – 11
Freshmen – 4
Transfers – 2

GAME NOTES

LOOKING AT DEPAUL

Entering the 'Chicago Cup' at 6-3, the Blue Demons have secured wins over Southern Indiana, St. Thomas, Bradley, Tulane, Portland State, and Brown.

Marie Zidek is in her sixth season as the head coach and has totaled 86 wins over that time against 117 losses. The team finished 2023 at 18-15 including a loss to Milwaukee in three sets on Sept. 12 of last season.

DePaul has been one of the top digging teams in the nation, ranked 21st in Division I in team digs with 603 on the season, which leads the Big East Conference. Rachel Krasowski leads the team and is 30th among individuals with 163 digs on the year. Jill Pressly has been the Blue Demons' top attacker at 4.08 kills per set, which is second in the league and 48th nationally.

LOOKING AT UIC

At 7-2, UIC is off to its best start since the COVID season of 2020-21, when the Flames started 11-1 to begin that season, when the team was still a member of the Horizon League. The only loss in that stretch came at the hands on Milwaukee on Feb. 22 of that season.

Justin Ingram leads the UIC squad that is one of the top attacking teams in the nation, ranked 18th in total kills and 19th in total assists. Zahria Woodard leads the team at 2.84 kills per set, while she is ranked 11th nationally in hitting percentage at .472.

Defensively Woodard is also among the leaders as she is 44th in the nation in total blocks (44) and is 127th nationally in blocks per set at 1.14. Hannah Howard is the team's top receiver with 121 digs good enough for 13th best in the Missouri Valley Conference.

UP NEXT

Horizon League play begins following the matchup against UIC on Saturday as Milwaukee will head to Oakland for a pair of league battles on Sept. 27 and Sept. 28. Last season the Panthers swept the Golden Grizzlies both in Michigan on October 13 and again at home in the regular season finale on Nov. 11.

1,000 CAREER DIGS

During Sunday's win over Iowa, Milwaukee senior Madi Malone recorded the 1,000th dig of her career as she makes a push towards the top-10 in the program's Division I history in digs. Currently the 10th position is occupied by Sam Trawitzke, who finished her career following the 2011 season with 1,412 digs.

Malone had a career-high 319 digs in 2023, after 289 as a sophomore and 292 during her freshman campaign.

ERDMANN'S NEW HIGH

After setting a career-high with 31 digs against Western Illinois on Aug. 31 earlier this season, Kara Erdmann pushed right past that number with a 36-dig effort in the team's five-set win over Illinois State on Sept. 13.

The 36 digs tied the third highest dig total in a five-set match in program history. The mark equals Sarah Schrader's mark from 2023 and Myanna Ruiz, who had 36 in a five-setter in 2015. The program record for digs in a five-set match is 41 set by Becky Peters back in 2005.

Erdmann is currently fifth in the nation with 186 digs this season, which also places her 18th nationally in digs per set at 4.89 in 2024.

REVERSE SWEEP

On Sept. 13 against Illinois State, the Milwaukee volleyball team reverse swept the Redbirds with 25-20, 25-18, 15-7 set wins in the latter portion of the match.

Milwaukee had two reverse sweeps in 2023 with one coming in non-conference play against Air Force on Sept. 15 and another later in the year against Purdue Fort Wayne in Horizon League action on Oct. 20 in Indiana.

The Panthers did not have any reverse sweeps in 2022 and had two back in 2021 against Western Michigan on Sept. 17, and one on Oct. 1 against Wright State.

LEADING THE TEAM

While many teams rely on one to two hitters to lead their offense, Milwaukee has had four different student-athletes lead the Panthers in kills through the team's season thus far.

Madi Malone has led the team in kills on three occasions as has Natalie Schmitz, Alexis Lewis and Bri Geurts have both led the team in kills on two occurrences this season.

SERVING UP AN ACE

After collecting just three service aces in limited service action as a junior, Lakyn Graves has been the top server for Milwaukee thus far with a team-best 17 service aces, which are second most in the Horizon League. Her per set total of 0.45 places her third in the league and in the top 130 nationally.

BUILDING BLOCKS

Milwaukee had a strong showing in the blocking game during two of their three matches of the 2024 Panther Invitational with the team tallying a season-high 14 against Illinois State on Sept. 13 and adding another 13 against Iowa two days later.

Against the Redbirds Lakyn Graves led the team with eight, followed by Alexis Lewis with six and Rachel Scott with four. Later in the weekend, Scott had a career-best with eight with Graves adding six and Bella Lipski getting in on the action with four blocks.

MALONE DOUBLING UP

With five double-doubles on the season, Madi Malone now has 41 double-doubles for her career.

Malone has 1,207 kills and is now in eighth on the Milwaukee all-time kills list, and is six behind the seventh position occupied by Kerri Schuh with 1,213.

Her 1,007 digs is also the most among active players, as are her 104 matches played, 386 sets played, and 68 service aces.

RECORD-SETTING CROWD

On August 30, the Panthers hosted their first-ever top-five opponent with the Stanford Cardinal visiting the Klotsche Center. With a total of 1,581 in attendance, including a student crowd of 968, the attendance figure broke the previous mark that had stood since the 2006 season, when Milwaukee and No. 11 Wisconsin drew a crowd of 1,121 in the final match of that season's Panther Invitational.

500 CAREER MATCHES

On Sunday, September 1, Susie Johnson coached her 500th career match as the head coach of the Panthers becoming the first head coach in Milwaukee Division I history to reach that milestone. Tom Pleyte, who coached the team from 1978 and through Milwaukee's first three Division I seasons from 1990-92, is the program's all-time leader having served as head coach for 807 matches. Kathy Litzau, who followed Pleyte and preceded Johnson led Milwaukee 423 times.

Last season, Johnson earned her 272nd head coaching victory to become

GAME NOTES

the department's all-time leader in wins in Division I history. She also recorded her 500th win as a Panther, earning 226 victories in 10 seasons as an assistant, while earning her 274th win as head coach against Purdue Fort Wayne on September 23.

NATIONAL RANKING

Milwaukee finished the 2023 regular season second in the nation with 1,608 kills, and after its postseason match against Cleveland State in the Horizon League First Round, added to its total to finish the year with 1,661, which was 22nd most in all of Division I in 2023 following the conclusion of the NCAA Championship.

The Panthers also finished 2023 with 1,546 assists, which was also 22nd in Division I, while the team finished 52nd in total blocks with 279.5. Both of those numbers were tops in the Horizon League. With a .255 team hitting percentage, Milwaukee led the Horizon League and finished the year 39th among 332 DI programs.

TOUGH SLATE ON TAP

Milwaukee is scheduled to play a tough slate of competition in 2024 including six teams that qualified for the 2023 NCAA Championship. The list includes Stanford (Aug. 30), Southern Methodist (Sept. 5), Weber State (Sept. 8), Wisconsin (Sept. 10), Wright State (Oct. 18-19), and Marquette (Oct. 22).

The 2024 American Volleyball Coaches Association Preseason Poll included Wisconsin (No. 3), Stanford (No. 5), Marquette (No. 24), as well as Southern Methodist and Loyola Marymount, who were receiving votes in the preseason tally.

PRESEASON POLL

After finishing the 2023 Horizon League schedule in a tie for second place with a 13-5 record, the Panthers were selected to finish third in the 2024 preseason poll, amassing 73 points and finishing just ahead of Green Bay with 71 points.

Wright State was selected to repeat as champions of the Horizon League with nine first-place votes and 99 points overall, while Northern Kentucky received the final first-place vote and recorded 85 points. Cleveland State took fifth with 63 points, while Oakland was projected to take the final playoff berth with 53 points.



SUSIE JOHNSON

HEAD COACH

18TH SEASON / 28TH OVERALL

IDAHO STATE '93

Head Coaching Records

Head Coaching Record at Milwaukee: 290-217

Head Coaching Conference Record at Milwaukee: 181-89

Head Coaching Career Record: 310-264

Career Coaching Records

Total Career Record at Milwaukee: 516-287

Total Career Conference Record at Milwaukee: 299-103

Total Career Record: 561-370

Postseason Appearances / Awards

NCAA Tournament Berths: 10 *

20-Win Seasons: 16 *

Regular Season Titles: 14 *

League Coach of the Year Titles: 5 *

Coaching Timeline

2007-present - Milwaukee, Head Coach *

1997-2006 - Milwaukee, Assistant Coach *

1995-96 - Indiana State, Assistant Coach

1993-94 - Parkside, Head Coach

Panthers Record When ...

At Home	2-2
On the Road	1-2
At a Neutral Site	2-1
vs. Horizon	0-0
In Three-Set Matches	0-4
In Four-Set Matches	3-1
In Five-Set Matches	2-0
Winning the First Set	2-1
Leading After Two Sets	1-0
Trailing After Two Sets	1-2
Tied After Two Sets	3-1
On Weekdays	1-4
On Weekends	4-1
On Mondays	0-0
On Tuesdays	0-1
On Wednesdays	0-0
On Thursdays	0-1
On Fridays	1-2
On Saturdays	2-1
On Sundays	2-0
In August	1-1
In September	4-4
In October	0-0
In November	0-0

2024 SCHEDULE AND RESULTS

Date	Opponent	Score	Set-by-Set	Overall	Horizon	Time	Att.
Aug. 30	No. 5 Stanford	L, 0-3	20-25, 25-27, 17-25	0-1		1:29	1,581

NORTHERN ILLINOIS TOURNAMENT (DeKalb, Ill.)

Aug. 31	vs. Western Illinois	W, 3-1	25-23, 22-25, 28-26, 25-23	1-1		2:26	104
Sept. 1	at Northern Illinois	W, 3-2	22-25, 25-18, 19-25, 25-19, 15-13	2-1		2:18	401

SOUTHERN METHODIST TOURNAMENT (Dallas, Texas)

Sept. 5	at RV Southern Methodist	L, 0-3	12-25, 20-25, 12-25	2-2		1:17	217
Sept. 6	vs. Loyola Marymount	L, 1-3	25-12, 21-25, 15-25, 19-25	2-3		1:51	450
Sept. 7	vs. Weber State	W, 3-1	25-27, 25-20, 25-21, 25-13	3-3		1:59	150
Sept. 10	at Wisconsin	L, 0-3	13-25, 13-25, 14-25	3-4		1:16	7,096

PANTHER INVITATIONAL (Milwaukee, Wis.)

Sept. 13	ILLINOIS STATE	W, 3-2	21-25, 22-25, 25-20, 25-18, 15-7	4-4		2:25	503
Sept. 14	ST. THOMAS	L, 0-3	21-25, 22-25, 16-25	4-5		1:20	459
Sept. 15	IOWA	W, 3-1	25-21, 26-24, 23-25, 26-24	5-5		2:06	411

CHICAGO CUP (Chicago, Ill.)

Sept. 19	at DePaul					7:00 pm	
Sept. 21	vs. UIC					3:00 pm	

Sept. 27	at Oakland *					5:00 pm	
Sept. 28	at Oakland *					1:00 pm	

Oct. 1	at Green Bay *					6:00 pm	
Oct. 4	IU INDIANAPOLIS *					6:00 pm	
Oct. 5	IU INDIANAPOLIS *					2:00 pm	
Oct. 11	at Northern Kentucky *					5:00 pm	
Oct. 12	at Northern Kentucky *					1:00 pm	
Oct. 18	WRIGHT STATE *					6:00 pm	
Oct. 19	WRIGHT STATE *					2:00 pm	
Oct. 22	at Marquette					7:00 pm	
Oct. 25	YOUNGSTOWN STATE *					6:00 pm	
Oct. 26	YOUNGSTOWN STATE *					2:00 pm	
Oct. 29	GREEN BAY *					6:00 pm	

Nov. 1	at Purdue Fort Wayne *					6:00 pm	
Nov. 2	at Purdue Fort Wayne *					1:00 pm	
Nov. 8	at Robert Morris *					5:00 pm	
Nov. 9	at Robert Morris *					12:00 pm	
Nov. 15	CLEVELAND STATE *					6:00 pm	
Nov. 16	CLEVELAND STATE *					2:00 pm	

HORIZON LEAGUE CHAMPIONSHIP

Nov. 22-24	Horizon League Tournament ^						
------------	-----------------------------	--	--	--	--	--	--

Home Games in **BOLD** | * Horizon League Match | ^ Horizon League Tournament



2024 MILWAUKEE MATCH-BY-MATCH

Date	Opponent	SP	Attack				Set			Serve				Recept			DIG	Blocking				BHE	POINTS	SCORE
			K	E	TA	PCT	A	TA	PCT	SA	SE	TA	PCT	RE	TA	PCT		BS	BA	BE	TOTAL			
08/30/2024	Stanford	3	29	15	79	.177	28	85	.329	5	6	63	.905	7	60	.883	32	1	8	0	5.0	0	39.0	0-3
08/31/2024	vs Western Ill.	4	55	16	228	.171	42	236	.178	9	10	99	.899	4	94	.957	91	5	14	0	12.0	0	76.0	3-1
09/01/2024	at NIU	5	58	19	183	.213	49	192	.255	6	10	105	.905	10	93	.892	77	1	10	0	6.0	2	70.0	3-2
09/05/2024	at SMU	3	23	13	68	.147	21	66	.318	2	9	46	.804	8	63	.873	10	0	4	2	2.0	0	27.0	0-3
09/06/2024	vs LMU (CA)	4	44	22	123	.179	39	114	.342	5	3	81	.963	7	78	.910	37	1	16	1	9.0	0	58.0	1-3
09/07/2024	vs Weber St.	4	54	18	162	.222	47	155	.303	6	9	99	.909	5	69	.928	76	0	14	1	7.0	0	67.0	3-1
09/10/2024	at Wisconsin	3	20	15	102	.049	19	105	.181	3	3	42	.929	8	68	.882	27	1	2	0	2.0	0	25.0	0-3
09/13/2024	Illinois St.	5	56	19	175	.211	51	175	.291	10	11	108	.898	3	88	.966	84	4	20	2	14.0	0	80.0	3-2
09/14/2024	St. Thomas (MN)	3	42	10	111	.288	42	111	.378	2	4	61	.934	9	68	.868	47	1	2	1	2.0	0	46.0	0-3
09/15/2024	Iowa	4	60	22	189	.201	50	169	.296	8	1	99	.990	4	92	.957	80	3	20	1	13.0	0	81.0	3-1
Totals		38	441	169	1420	.192	388	1408	.276	56	66	803	.918	65	773	.916	561	17	110	8	72.0	2	569.0	
Opponents		38	541	209	1477	.225	500	1504	.332	65	79	852	.907	56	737	.924	669	21	100	10	71.0	1	677.0	

Team Averages

Sets Played	Kills per set	Assists per set	Service aces per set	Digs per set	Blocks per set	Points per set	Ball handling error per set	Reception errors per set
38	11.61	10.21	1.47	14.76	1.89	14.97	0.05	1.71

ACTIVE CAREER LEADERS

Matches Played

Madi Malone	104
Bri Geurts	92
Josie Johnson	73
Natalie Schmitz	73

Consecutive Matches Played

Madi Malone	104
Josie Johnson	70
Natalie Schmitz	70

Sets Played

Madi Malone	386
Bri Geurts	325
Josie Johnson	271
Natalie Schmitz	271

Kills

Madi Malone	1,207
Natalie Schmitz	741
Bri Geurts	456

Double-Figure Kills

Madi Malone	63
Natalie Schmitz	40
Bri Geurts	11

Digs

Madi Malone	1,007
Kara Erdmann	610
Josie Johnson	424

Double-Figure Digs

Madi Malone	53
Kara Erdmann	25
Josie Johnson	9
Kati Goba	8

Total Blocks

Bri Guerts	184
Lakyn Graves	161*
Czhen Beneby	135*
Madi Malone	112

* - Milwaukee Statistics Only

Assists

Josie Johnson	1,349
Milica Tomic	147
Kara Erdmann	107

Double-Doubles

Madi Malone	41
Josie Johnson	9
Milica Tomic	2

Service Aces

Madi Malone	68
Josie Johnson	44
Natalie Schmitz	35

2024 OVERALL STATISTICS

			Attack					Set		Serve				Dig		Blocking						
##	Player	SP	K	K/S	E	TA	PCT	A	A/S	SA	SE	SA/S	RE	DIG	DIG/S	BS	BA	TOT/S	BLK/S	BE	BHE	PTS
2	Geurts, Bri	37	65	1.76	27	183	.208	2	0.05	0	0	0.00	0	19	0.51	0	14	14	0.38	5	0	72.0
3	Graves, Lakyn	38	72	1.89	28	179	.246	2	0.05	17	18	0.45	0	23	0.61	7	27	34	0.89	0	0	109.5
4	Johnson, Josie	38	11	0.29	0	51	.216	187	4.92	8	8	0.21	0	51	1.34	0	0	0	0.00	0	1	19.0
5	Tomic, Milica	38	1	0.03	0	27	.037	147	3.87	5	8	0.13	0	65	1.71	0	0	0	0.00	0	1	6.0
6	Lewis, Alexis	37	49	1.32	28	137	.153	0	0.00	0	0	0.00	0	3	0.08	5	23	28	0.76	1	0	65.5
7	Wire, Gabby	1	0	0.00	0	0	.000	0	0.00	0	0	0.00	0	0	0.00	0	0	0	0.00	0	0	0.0
9	Goba, Kati	38	0	0.00	0	12	.000	15	0.39	0	3	0.00	15	57	1.50	0	0	0	0.00	0	0	0.0
11	Schmitz, Natalie	38	109	2.87	40	353	.195	1	0.03	11	13	0.29	8	30	0.79	2	9	11	0.29	0	0	126.5
12	Lipski, Bella	3	3	1.00	3	10	.000	0	0.00	0	0	0.00	0	0	0.00	0	5	5	1.67	2	0	5.5
13	Erdmann, Kara	38	1	0.03	0	11	.091	27	0.71	3	1	0.08	10	186	4.89	0	0	0	0.00	0	0	4.0
14	Malone, Madi	38	102	2.68	33	331	.208	2	0.05	10	7	0.26	21	107	2.82	0	6	6	0.16	0	0	115.0
15	Hansen, Emily	5	1	0.20	2	5	-.200	0	0.00	0	0	0.00	0	1	0.20	0	1	1	0.20	0	0	1.5
16	Scott, Rachel	37	27	0.73	8	121	.157	3	0.08	0	0	0.00	0	13	0.35	3	25	28	0.76	0	0	42.5
17	Cook, Hallie	30	0	0.00	0	0	.000	2	0.07	2	8	0.07	0	6	0.20	0	0	0	0.00	0	0	2.0
MILWAUKEE		38	441	11.61	169	1420	.192	388	10.21	56	66	1.47	65	561	14.76	17	110	72	1.89	8	2	569.0
Opponents		38	541	14.24	209	1477	.225	500	13.16	65	79	1.71	56	669	17.61	21	100	71	1.87	10	1	677.0

FINAL 2023 HORIZON LEAGUE STATISTICS

##	Player	SP	MP-MS	Attack					Set				Serve				
				K	K/S	E	TA	PCT	A	A/S	TA	PCT	SA	SA/S	SE	TA	PCT
2	Geurts, Bri	54	15-3	54	1.00	27	146	.185	3	0.06	17	.176	0	0.00	0	3	1.000
3	Graves, Lakyn	67	18-18	101	1.51	35	225	.293	4	0.06	20	.200	0	0.00	2	2	.000
4	Johnson, Josie	67	18-15	12	0.18	4	41	.195	328	4.90	893	.367	15	0.22	15	250	.940
6	Miller, Ari	67	18-18	194	2.90	48	408	.358	9	0.13	35	.257	16	0.24	20	225	.911
8	Blake, Kaley	67	18-3	4	0.06	1	25	.120	364	5.43	832	.438	17	0.25	9	256	.965
9	Goba, Kati	28	10-1	2	0.07	0	5	.400	34	1.21	94	.362	3	0.11	5	84	.940
10	Beneby, Czhen	35	10-9	59	1.69	28	126	.246	0	0.00	12	.000	0	0.00	0	0	.000
11	Schmitz, Natalie	67	18-7	182	2.72	65	522	.224	2	0.03	26	.077	7	0.10	7	80	.913
12	Lipski, Bella	24	7-3	11	0.46	7	33	.121	0	0.00	5	.000	0	0.00	0	0	.000
13	Erdmann, Kara	41	14-1	0	0.00	1	3	-.333	22	0.54	98	.224	1	0.02	3	82	.963
14	Malone, Madi	67	18-18	253	3.78	64	640	.295	12	0.18	68	.176	21	0.31	10	267	.963
15	Schrader, Sarah	67	18-10	1	0.01	6	19	-.263	53	0.79	141	.376	23	0.34	15	279	.946
16	Scott, Rachel	25	8-2	22	0.88	7	63	.238	4	0.16	14	.286	0	0.00	0	0	.000
17	Jakscht, Mati	2	1-0	0	0.00	0	1	.000	0	0.00	3	.000	0	0.00	0	0	.000
MILWAUKEE		67	18-18	895	13.36	293	2257	.267	835	12.46	2258	.370	103	1.54	86	1528	.944
Opponents		67	18-18	851	12.70	388	2393	.193	808	12.06	2419	.334	109	1.63	124	1377	.910

2024 SEASON BESTS

ATTACK PERCENTAGE (min. 10 kills)

Team: .288 vs. St. Thomas (Sept. 14)
 Individual: .333 (Graves) vs. Illinois State (Sept. 13)
 Opponent: .515 at SMU (Sept. 5)

KILLS

Team: 60 vs. Iowa (Sept. 15)
 Individual: 18 (Malone) Twice
 Opponent: 67 vs. Iowa (Sept. 15)

ASSISTS

Team: 51 vs. Illinois State (Sept. 13)
 Individual: 26 (Johnson) vs. Illinois State (Sept. 13)
 Opponent: 63 vs. Iowa (Sept. 15)

DIGS

Team: 91 vs. Western Illinois (Aug. 31)
 Individual: 36 (Erdmann) vs. Illinois State (Sept. 13)
 Opponent: 113 vs. Western Illinois (Aug. 31)

SERVICE ACES

Team: 10 vs. Illinois State (Sept. 13)
 Individual: 4 (Schmitz) vs. Weber State (Sept. 7)
 Opponent: 10 at Northern Illinois (Sept. 1)

TOTAL BLOCKS

Team: 14 vs. Illinois State (Sept. 13)
 Individual: 8 (Graves & Scott) Once Each
 Opponent: 12 vs. Loyola Marymount (Sept. 6)

2024 SEASON & CAREER HIGHS

1 Tatum Catalano | Sr. | OH/RS**2024 Season Highs**

Kills n/a
 Attempts n/a
 Hitting % n/a
 Blocks n/a
 Digs n/a
 Aces n/a
 Assists n/a

Career Highs

Kills 4 (Twice)
 Attempts 12 (9/9/22 vs. LSU)
 Hitting % .. 1.000 [1-0-1] (10/7/22 vs. CSU)
 Blocks 4 (Twice)
 Digs 4 (10/8/22 vs. OAK)
 Aces same
 Assists 1 (Twice)

4 Josie Johnson | Jr. | S**2024 Season Highs**

Kills 3 (8/31 vs. Western Ill.)
 Attempts 16 (8/31 vs. Western Ill.)
 Hitting % 1.000 (8/30 vs. Stanford)
 Blocks n/a
 Digs 11 (9/13 vs. Illinois State)
 Aces 3 (9/13 vs. Illinois State)
 Assists 26 (9/13 vs. Illinois State)

Career Highs

Kills 3 (Three Times)
 Attempts same
 Hitting % ... 1.000 [2-0-2] (10/13/23 at Oak.)
 Blocks 1 (Three Times)
 Digs 16 (9/15/23 vs. Air Force)
 Aces 3 (Twice)
 Assists 32 (9/8/23 vs. Western Illinois)

7 Gabby Wire | Fr. | OH**2024 Season Highs**

Kills n/a
 Attempts n/a
 Hitting % n/a
 Blocks n/a
 Digs n/a
 Aces n/a
 Assists n/a

Career Highs

Kills same
 Attempts same
 Hitting % same
 Blocks same
 Digs same
 Aces same
 Assists same

2 Bri Geurts | Sr. | RS/MB**2024 Season Highs**

Kills 11 (9/14 vs. St. Thomas)
 Attempts 28 (9/13 vs. Illinois State)
 Hitting %500 (9/14 vs. St. Thomas)
 Blocks 3 (Twice)
 Digs 6 (8/31 vs. Western Ill.)
 Aces n/a
 Assists 2 (9/13 vs. Illinois State)

Career Highs

Kills 15 (9/8/23 vs. Western Illinois)
 Attempts 30 (9/17/22 vs. New Mexico St.)
 Hitting %750 [3-0-4] (Twice)
 Blocks 9 (10/8/22 vs. Oakland)
 Digs 6 (Three Times)
 Aces 2 (Five Times)
 Assists 3 (Twice)

5 Milica Tomic | Fr. | S**2024 Season Highs**

Kills 1 (9/13 vs. Illinois State)
 Attempts 15 (8/31 vs. Western Ill.)
 Hitting %500 (9/13 vs. Illinois State)
 Blocks n/a
 Digs 12 (9/13 vs. Illinois State)
 Aces 2 (9/15 vs. Iowa)
 Assists 23 (9/15 vs. Iowa)

Career Highs

Kills same
 Attempts same
 Hitting % same
 Blocks same
 Digs same
 Aces same
 Assists same

8 Jenna Soerens | Fr. | OH/RS**2024 Season Highs**

Kills n/a
 Attempts n/a
 Hitting % n/a
 Blocks n/a
 Digs n/a
 Aces n/a
 Assists n/a

Career Highs

Kills same
 Attempts same
 Hitting % same
 Blocks same
 Digs same
 Aces same
 Assists same

3 Lakyn Graves | Sr. | MB**2024 Season Highs**

Kills 12 (9/13 vs. Illinois State)
 Attempts 30 (8/31 vs. Western Ill.)
 Hitting %500 (9/14 vs. St. Thomas)
 Blocks 8 (9/13 vs. Illinois State)
 Digs 4 (Twice)
 Aces 3 (Four Times)
 Assists 1 (Twice)

Career Highs

Kills same
 Attempts 30 (Twice)
 Hitting %625 [5-0-8] (9/12/23 vs. DePaul)
 Blocks 13 (9/3/21 vs. Arizona State)
 Digs 6 (8/25/23 at West. Michigan)
 Aces same
 Assists 1 (Six Times)

6 Alexis Lewis | Sr. | MB**2024 Season Highs**

Kills 10 (9/6 vs. LMU)
 Attempts 24 (9/7 vs. Weber State)
 Hitting % .. .429 [4-1-7] (8/30 vs. Stanford)
 Blocks 7 (9/6 vs. LMU)
 Digs 1 (Three Times)
 Aces n/a
 Assists n/a

Career Highs

Kills 14 (10/8/21 vs. Wichita St.)
 Attempts 35 (10/15/21 at Tulane)
 Hitting % 1.000 [1-0-1] (Twice)
 Blocks same
 Digs 6 (9/3/22 at TCU)
 Aces 1 (8/27/22 vs. East. Washington)
 Assists 1 (Four Times)

9 Kati Goba | So. | L/DS**2024 Season Highs**

Kills n/a
 Attempts 4 (8/31 vs. Western Ill.)
 Hitting % n/a
 Blocks n/a
 Digs 13 (8/31 vs. Western Ill.)
 Aces n/a
 Assists 3 (Twice)

Career Highs

Kills 1 (Twice)
 Attempts same
 Hitting % 1.000 [1-0-1] (10/27/23 vs. YSU)
 Blocks 1 (9/1/23 vs. Mont. St.)
 Digs 16 (11/10/23 vs. Cleveland State)
 Aces 1 (Three Times)
 Assists 8 (10/28/23 vs. Robert Morris)

2024 SEASON & CAREER HIGHS

10 Czhen Beneby | Sr. | MB/RS**2024 Season Highs**

Kills	n/a
Attempts	n/a
Hitting %	n/a
Blocks	n/a
Digs	n/a
Aces	n/a
Assists	n/a

Career Highs

Kills	15 (11/1/22 vs. PFW)
Attempts	26 (11/5/22 at CSU)
Hitting % ..	.800 [8-0-10] (9/23/22 vs. YSU)
Blocks	6 (Four Times)
Digs	5 (10/22 at YSU)
Aces	same
Assists	1 (Four Times)

13 Kara Erdmann | Jr. | DS**2024 Season Highs**

Kills	1 (9/7 vs. Weber State)
Attempts	5 (Twice)
Hitting %	1.000 (9/7 vs. Weber State)
Blocks	n/a
Digs	36 (9/13 vs. Illinois State)
Aces	2 (9/15 vs. Iowa)
Assists	6 (9/7 vs. Weber State)

Career Highs

Kills	1 (Three Times)
Attempts	same
Hitting %	1.000 [1-0-1] (Three Times)
Blocks	same
Digs	same
Aces	2 (Twice)
Assists	6 (Twice)

16 Rachel Scott | Jr. | RS**2024 Season Highs**

Kills	6 (9/15 vs. Iowa)
Attempts	26 (9/15 vs. Iowa)
Hitting %429 (9/1 at Northern Ill.)
Blocks	8 (9/15 vs. Iowa)
Digs	3 (9/7 vs. Weber State)
Aces	n/a
Assists	1 (Twice)

Career Highs

Kills	9 (9/23/23 vs. PFW)
Attempts	15 (9/23/23 vs. PFW)
Hitting % ..	.750 [3-0-4] (9/22/23 vs. IUPUI)
Blocks	same
Digs	6 (9/29/23 at Robert Morris)
Aces	same
Assists	2 (Twice)

11 Natalie Schmitz | Jr. | OH**2024 Season Highs**

Kills	17 (Twice)
Attempts	52 (8/31 vs. Western Ill.)
Hitting %327 [17-1-49] (9/7 vs. Weber St.)
Blocks	3 (9/6 vs. LMU)
Digs	7 (Twice)
Aces	4 (9/7 vs. Weber State)
Assists	1 (9/13 vs. Illinois State)

Career Highs

Kills	17 (Six Times)
Attempts ..	54 (9/8/23 vs. Western Illinois)
Hitting % ..	.647 [11-0-17] (10/28/23 vs. RMU)
Blocks	4 (Four Times)
Digs	8 (10/6/23 vs Northern Ky.)
Aces	same
Assists	2 (9/12/23 vs. DePaul)

14 Madi Malone | Sr. | OH**2024 Season Highs**

Kills	18 (Twice)
Attempts	52 (8/31 vs. Western Ill.)
Hitting %348 (9/14 vs. St. Thomas)
Blocks	2 (9/13 vs. Illinois State)
Digs	21 (9/7 vs. Weber State)
Aces	3 (8/31 vs. Western Ill.)
Assists	2 (9/7 vs. Weber State)

Career Highs

Kills	29 (10/1/21 vs. WSU)
Attempts	66 (10/1/21 vs. WSU)
Hitting % ..	.467 [9-2-15] (9/11/21 at C-Ark)
Blocks	4 (9/1/23 vs. Cal. Baptist)
Digs	same
Aces	6 (10/27/23 vs. Youngstown St.)
Assists	3 (Four Times)

17 Hallie Cook | Jr. | DS/L**2024 Season Highs**

Kills	n/a
Attempts	n/a
Hitting %	n/a
Blocks	n/a
Digs	2 (9/14 vs. St. Thomas)
Aces	1 (Twice)
Assists	1 (Twice)

Career Highs

Kills	16 (9/30 vs. Chattanooga)
Attempts	48 (9/30 vs. Chattanooga)
Hitting % ..	.500 [3-1-4] (9/22/22 vs. SC St.)
Blocks	3 (9/16 vs. UNC Asheville)
Digs	13 (Twice)
Aces	2 (Five Times)
Assists	2 (Twice)

12 Bella Lipski | So. | MB**2024 Season Highs**

Kills	3 (9/15 vs. Iowa)
Attempts	8 (9/15 vs. Iowa)
Hitting %125 (9/15 vs. Iowa)
Blocks	4 (9/15 vs. Iowa)
Digs	n/a
Aces	n/a
Assists	n/a

Career Highs

Kills	4 (10/27/23 vs. Youngstown St.)
Attempts	8 (Twice)
Hitting % ..	.500 [4-0-8] (10/27/23 vs. YSU)
Blocks	5 (10/21/23 at IUPUI)
Digs	2 (10/21/23 at IUPUI)
Aces	same
Assists	same

15 Emily Hansen | Fr. | OH/RS**2024 Season Highs**

Kills	1 (9/7 vs. Weber State)
Attempts	4 (9/7 vs. Weber State)
Hitting %000 (9/7 vs. Weber State)
Blocks	1 (8/31 vs. Western Ill.)
Digs	1 (9/7 vs. Weber State)
Aces	n/a
Assists	n/a

Career Highs

Kills	same
Attempts	same
Hitting %	same
Blocks	same
Digs	same
Aces	same
Assists	same